



Specification Sheet

Amorphous Silicon (a-Si) Thin Film Solar Modules

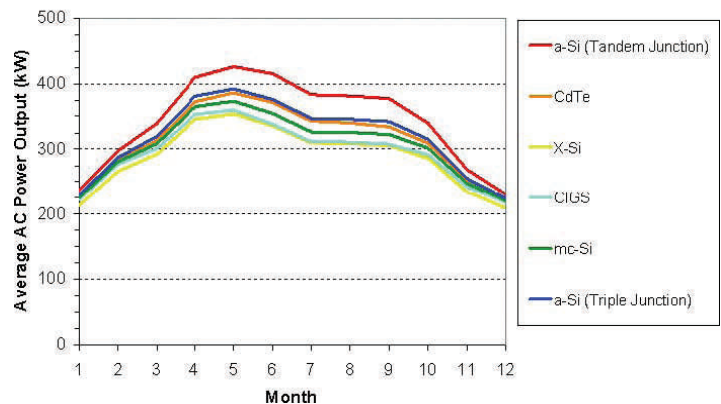
Module Number ASI-120

- Rated Power (P Max) 127.5 Watts@STC
- Nominal Voltage 50V/100V
- Limited Warranty 20+ Years

a-Si Solar Panels Superior Choice for:

- Hot, Cloudy or Hazy Locations
- Early Mornings & Late Afternoons
- Northern and Southern Latitudes
- Partial Shade Conditions
- Life on Earth

Annual System Output (Year 1)
1mW 1-axis Tracking Field Installations, Phoenix, AZ



ASI-120 Solar Modules, as shown in the graph above, are designed to outperform silicon wafer, CIGS and CTde in environments where other solar panels experience significant electrical output loss. These PV modules use two stacked layers of amorphous silicon, a proven and reliable thin film material, to achieve a stabilized efficiency of 7.9% at the module level. These modules are glass on glass, with no aluminum frame and use a standard UL approved J-box. Included is also a self-tapping grounding screw, instructions and warranty information.

- High Power Module: (127.5 Watts@STC) using a-Si
- Environmentally Friendly: No heavy metals such as cadmium or lead
- UL, TUV & IEC Certifiable
- High Voltage: 50V, ideal for use with high power inverters for On-Grid applications

Let XsunX help you plan the growth of your solar business!

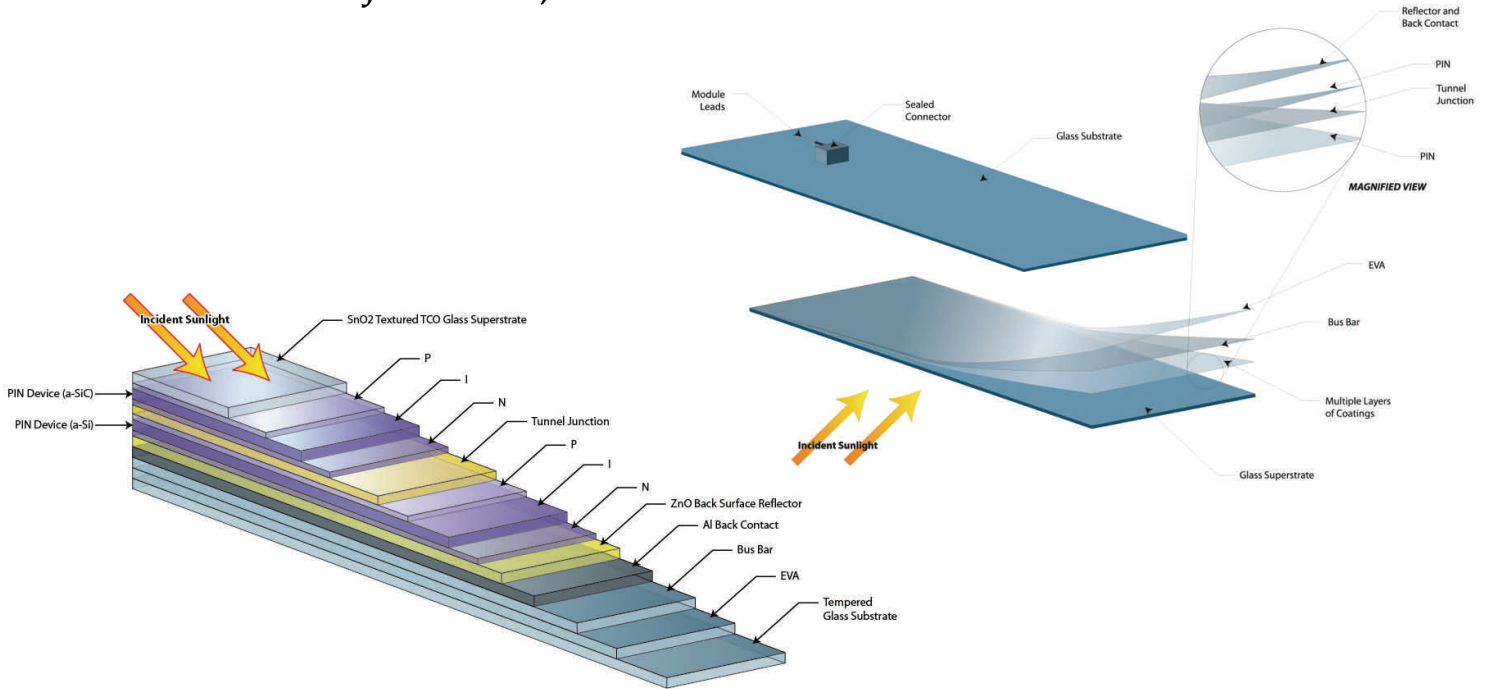
www.XsunX.com

23365 N.E. Halsey Street, Wood Village, OR 97060 USA (949) 330-8060



Solar Products for Life on Earth®

Tandem Junction, a-Si Solar Cell for ASI-120 Modules



Electrical Characteristics* of Modules

Cell Spacing	1.2 cm
Number of Cells per module	82
Maximum Power Point Voltage, V_{mpp}	2 Strings, 50 V ea or 100 V
Maximum Power Point Circuit, I_{mpp}	1.27 A/String, 2.54 A/parallel
Open Circuit Voltage, V_{OC}	58.0 V/String
Short Circuit Current, I_{sc}	1.50 A/String, 3.00 A/parallel
Maximum Power, P_{max}	127 Watts
Module Efficiency, Total Area	7.9%
Maximum System Voltage, @ V_{oc} , 0° C	600 Volts
Series Fuse Rating	10 Amps
Output Termination	Male/Female
Diode	Bi-Pass

Physical Characteristics* of Modules

Dimensions (length x width)	100 x 160 cm (39 x 63 in)
Weight	22.73 kg (50 lbs)
Packaging	Crate of 16 modules

Maximum Temperature Ratings of Modules

Operating and Storage Temperature	-40° to 180° F -40° to 82° C
-----------------------------------	---------------------------------

* projected characteristics

Let XsunX help you plan the growth of your solar business!

www.XsunX.com

23365 N.E. Halsey Street, Wood Village, OR 97060 USA (949) 330-8060